

TENSOR AB

Copyright TENSOR AB

AHA-9500 Series

The 9500 series are low weight cutters made for wire, rods with low tensile strength or low hardness. It is also applicable on wire with high hardness. The 9500 tool gives a square ended cut.

The 9500 tools can be supplied with a straight or profiled passing shear. Straight shear is more suitable for rods with low tensile strength.

The 9500 tools are hydraulically operated with a maximum pressure of 700 Bar and can be supplied for single or double acting operation.

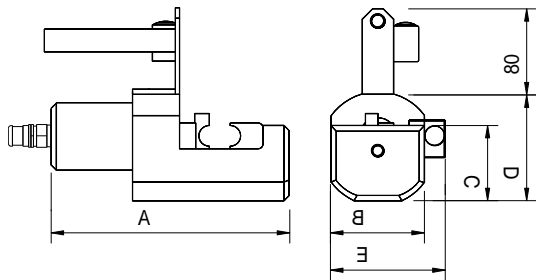
The 9500 series are very easy to operate by a switch on the handle or by a foot pedal.

Recommended powerpack units:
 AHP-7010, electric pump.
 AHP-7020, electric pump.
 AHP-7005-H, hand pump.
 AHP-7003- P, pneumatic pump.

Accessories:
 Hosekit AH-SL

DIMENSIONS (mm):

| | 9510 | 9514 | 9518 | 9524 | 9530 | 9540 |
|----------|------|------|------|------|------|------|
| A | 202 | 219 | 300 | 307 | 360 | 450 |
| B | 50 | 65 | 80 | 95 | 120 | 165 |
| C | 38 | 51 | 79 | 86 | 108 | 145 |
| D | 53 | 68 | 100 | 108 | 133 | 178 |
| E | 60 | 79 | 100 | 119 | 150 | 205 |



Ten200508



CUTTING DATA WIRE DIAMETER:

| Tensile Strength | 9510 | 9514 | 9518 | 9524 | 9530 | 9540 |
|-------------------|------|------|------|------|------|------|
| N/mm ² | | | | | | |
| Straight shear | | | | | | |
| 200 | 18 | 26 | 33 | 44 | 56 | 74 |
| Profiled shear | | | | | | |
| 700 | 10 | 14 | 18 | 24 | 30 | 40 |
| 1800 | 6 | 8 | 11 | 15 | 19 | 25 |

CUTTING TIME:

| Pump unit | 9510 | 9514 | 9518 | 9524 | 9530 | 9540 |
|-----------|------|------|------|------|------|------|
| AHP-7010 | 1 | 2,5 | 5 | 11 | 20 | 46 |
| AHP-7020 | 0,5 | 1,3 | 2,5 | 5,5 | 10 | 23 |

| WEIGHT: | 9510 | 9514 | 9518 | 9524 | 9530 | 9540 |
|---------|------|------|------|------|------|------|
| | 3 | 4 | 11 | 15 | 25 | 40 |

SPECIFICATION:

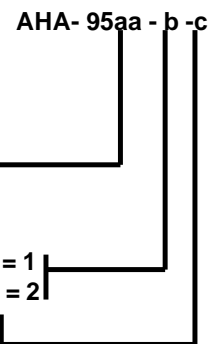
CUTTER Square cut

a= Max dimension:

| | |
|----|----|
| mm | 10 |
| | 14 |
| | 18 |
| | 24 |
| | 30 |
| | 40 |

b= Function: Singleacting = 1
 Doubleacting = 2

c=Shear type: Profiled = 1
 Straight = 2



ACCESOIRES:

HANDLE

Without electrical switch = 0
 With electrical switch = 1

AHZ- a

Subject to alteration without previous notice.

TENSOR AB, Vagnmakaregatan 1 b, S-415 72, GOTHENBURG, SWEDEN

TELEPHONE +46 31 790 42 00

E-mail: info@tensor.se

Website: www.tensor.se