

TENSOR AB

Copyright TENSOR AB

AHA-2500 Series

The 2500 series are Low Weight Cutters designed for chains and rods with high tensile strength or high hardness. The 2500 tool gives a pinch ended cut.

The 2500 tools are hydraulically operated with a maximum pressure of 700 Bar and can be supplied for single or doubleacting operation

The 2500 tools are very easy to operate by a switch on the handle or by a foot pedal.

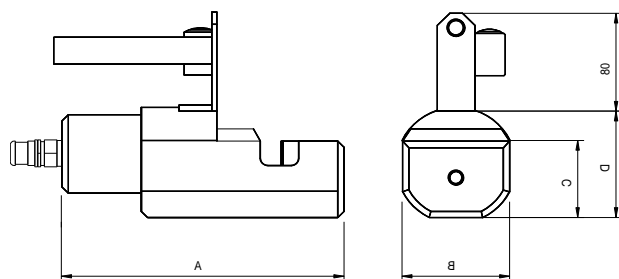
Recommended powerpack units:

- AHP-7002, electric pump.
- AHP-8005, electric pump.
- AHP-8011, electric pump.
- AHP-7005-H, hand pump.
- AHP-7003- P, pneumatic pump.

Accessories:
Hosekit AHK

DIMENSIONS (mm):

	2511	2516	2522	2528	2535
A	196	232	327	382	400
B	65	85	107	120	150
C	47	63	86	98	115
D	70	90	121	138	160



CUTTING DATA WIRE DIAMETER:

Cutter	2511	2516	2522	2528	2535
Tensile strength 900MPa	11	16	22	28	35
Chain cl 8	9	13	16	22	26
Chain cl 10	8	10	13	19	22
Chain cl 2/ 3	11	16	22	28	35

CUTTING TIME:

Cutter	2511	2516	2522	2528	2535
Chain dia	9	11	16	22	26
AHP-7002	1,3	2,5	6,0	10,9	18,5
AHP-8005	0,5	1,0	2,6	4,5	7,5

WEIGHT: 5 8 18 21 40 kg

SPECIFICATION:

CUTTER Pinch Cut

a= Max dimension:

mm 11
16
22
28
35

b= Function: Singleacting = 1
Doubleacting = 2

AHA- 25aa- b

ACCESOIRES:

HANDLE

Without electrical switch = 0
With electrical switch = 1

AHZ- a

TEN200704

Subject to alteration without previous notice.

TENSOR AB, Vagnmakaregatan 1b, S-415 72, GOTHENBURG, SWEDEN

TELEPHONE + 46 31 790 42 00

E-mail: info@tensor.se

Website: www.tensor.se