

LP1

The LP1 is a pneumatic driven high pressure pump unit, option from 150 up to 4700 Bar. A stainless steel frame protects the pump unit. It is designed for mobile duty for bolt tensioning equipment in offshore applications, petro-chemical industri, nuclear plant etc.

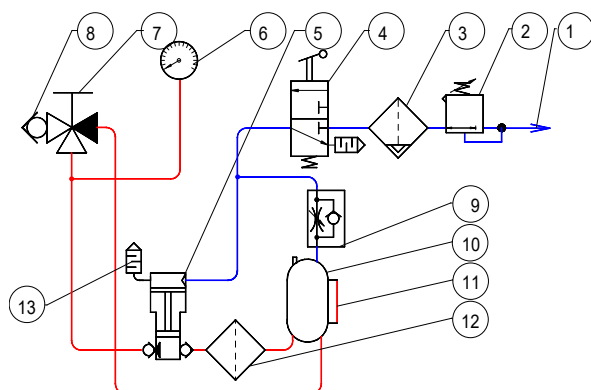
The LP1 unit is delivered ready to go with quick connections to pneumatic air and hydraulic. The pressurised tank is normally filled with a water glycol mixture, option hydraulic oil, water or any other fluid media.

The LP1 unit contains a pressure regulator to adjust the maximum permitted output pressure, filter for air and hydraulic fluid, pressurised tank, a $\phi 160$ mm manometer for hydraulic pressure and a relief valve for hydraulic fluid.

The LP1 is very easy to operate; one lever for pressure and a cock wrench for relief.



Schedule:



- | | | |
|-----------------------|-----------------------------|------------------|
| 1. Air inlet | 6. Manometer | 10. Oil tank |
| 2. Pressure regulator | 7. Relief valve | 11. Oil level |
| 3. Air filter | 8. High pressure connection | 12. Oil filter |
| 4. Operating valve | 9. Reduce / check valve | 13. Air silencer |
| 5. Pump unit | | |

Technical data:

Standard pressure: 1000 Bar at 5,5 Bar
 Discharge at 850 Bar: 0,6 l/min
 Air consumption: 2 m³/min
 Tank volume: 3 l

Dimensions:

Length*width*height: 370*550*650 mm
 Weight: 40 kg

Options:

Custom design.
 Pressure: from 150 up to 4700 Bar.
 Fluid: oil, water or custom request.
 Electronic pressure regulator.