

TENSOR AB

Copyright TENSOR AB

AHA-9500 Series

The 9500 series are low weight cutters made for wire, rods with low tensile strength or low hardness. It is also applicable on wire with high hardness. The 9500 tool gives a square ended cut.

The 9500 tools can be supplied with a straight or profiled passing shear. Straight shear is more suitable for rods with low tensile strength.

The 9500 tools are hydraulically operated with a maximum pressure of 700 Bar and can be supplied for single or double acting operation.

The 9500 tools are CE marked

The 9500 series are very easy to operate by a switch on the handle or by a foot pedal.

Recommended powerpack units:

AHP-7010, electric pump.

AHP-7020, electric pump.

AHP-7005-H, hand pump.

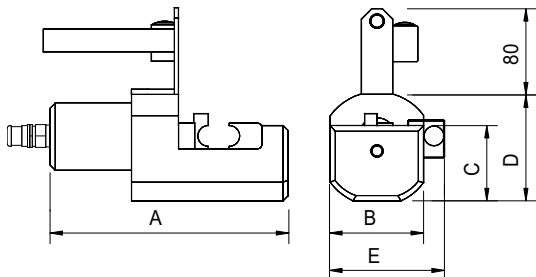
AHP-7003- P, pneumatic pump.

Accessories:

Hosekit AH-SL

DIMENSIONS (mm):

	9510	9514	9518	9524	9530	9540
A	202	219	300	307	360	450
B	50	65	80	95	120	165
C	38	51	79	86	108	145
D	53	68	100	108	133	178
E	60	79	100	119	150	205



Ten200508



CUTTING DATA WIRE DIAMETER:

Tensile Strength	Wire Diameter (mm)					
N/mm ²	9510	9514	9518	9524	9530	9540
Straight shear						
200	18	26	33	44	56	74
Profiled shear						
700	10	14	18	24	30	40
1800	6	8	11	15	19	25

CUTTING TIME:

Pump unit	Wire Diameter (mm)					
	9510	9514	9518	9524	9530	9540
AHP-7010	1	2,5	5	11	20	46
AHP-7020	0,5	1,3	2,5	5,5	10	23

WEIGHT:	Wire Diameter (mm)					
	9510	9514	9518	9524	9530	9540
	3	4	11	15	25	40

SPECIFICATION:

CUTTER Square cut

a= Max dimension:

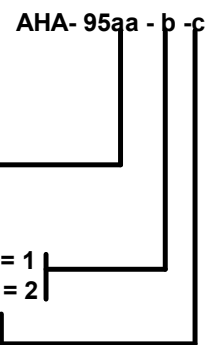
mm	10	14	18	24	30	40

b= Function: Singleacting = 1

Doubleacting = 2

c=Shear type: Profiled = 1

Straight = 2



ACCESOIRES:

HANDLE

Without electrical switch = 0

With electrical switch = 1

AHZ- a

Subject to alteration without previous notice.

TENSOR AB, Vagnmakaregatan 1 b, S-415 72, GOTHENBURG, SWEDEN

TELEPHONE +46 31 790 42 00

E-mail: info@tensor.se

Website: www.tensor.se