

AHA-2500 Series

The 2500 series are Low Weight Cutters designed for chains and rods with high tensile strength or high hardness. The 2500 tool gives a pinch ended cut.

The 2500 tools are hydraulically operated with a maximum pressure of 700 Bar and can be supplied for single or doubleacting operation

The 2500 tools are CE marked.

The 2500 tools are very easy to operate by a switch on the handle or by a foot pedal.

Recommended powerpack units:

AHP-7002, electric pump.

AHP-8005, electric pump.

AHP-8011, electric pump.

AHP-7005-H, hand pump.

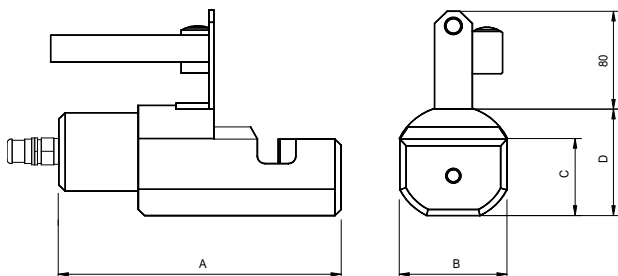
AHP-7003- P, pneumatic pump.

Accessories:

Hosekit AHK

DIMENSIONS (mm):

| | 2511 | 2516 | 2522 | 2528 | 2535 |
|----------|------|------|------|------|------|
| A | 196 | 232 | 327 | 382 | 400 |
| B | 65 | 85 | 107 | 120 | 150 |
| C | 47 | 63 | 86 | 98 | 115 |
| D | 70 | 90 | 121 | 138 | 160 |



CUTTING DATA WIRE DIAMETER:

| Cutter | 2511 | 2516 | 2522 | 2528 | 2535 |
|-------------------------|------|------|------|------|------|
| Tensile strength 900MPa | 11 | 16 | 22 | 28 | 35 |
| Chain cl 8 | 9 | 13 | 16 | 22 | 26 |
| Chain cl 10 | 8 | 10 | 13 | 19 | 22 |
| Chain cl 2/ 3 | 11 | 16 | 22 | 28 | 35 |

CUTTING TIME:

| Cutter | 2511 | 2516 | 2522 | 2528 | 2535 |
|-----------|------|------|------|------|------|
| Chain dia | 9 | 11 | 16 | 22 | 26 |
| AHP-7002 | 1,3 | 2,5 | 6,0 | 10,9 | 18,5 |
| AHP-8005 | 0,5 | 1,0 | 2,6 | 4,5 | 7,5 |

WEIGHT: 5 8 18 21 40 kg

SPECIFICATION:

CUTTER Pinch Cut

a= Max dimension:

mm
11
16
22
28
35

b= Function: Singleacting = 1
Doubleacting = 2

AHA- 25aa- b

ACCESOIRES:

HANDLE

Without electrical switch = 0
With electrical switch = 1

AHZ- a